

# **AUTOMATED SYSTEM QUESTIONNAIRE**

**Completion of this questionnaire is required for Highlight Industries to provide an accurate quotation on the Synergy or Freedom Automatic systems. Provisions set forth in this document will be the standard for design of the system. Please complete this questionnaire with as much detail as possible.**

**DIRECTIONS: Fill in the information requested pertaining to your Specific application.**

**Questions left blank will be assumed to be irrelevant.**

## 1. CUSTOMER INFORMATION

Company: \_\_\_\_\_ Date: \_\_\_\_\_

Contact: \_\_\_\_\_ Title: \_\_\_\_\_

Address: \_\_\_\_\_

City, state, zip: \_\_\_\_\_

Telephone: (\_\_\_\_\_) \_\_\_\_\_ Ext. \_\_\_\_\_ Fax: (\_\_\_\_\_) \_\_\_\_\_

E-mail: \_\_\_\_\_

## 2. DISTRIBUTOR INFORMATION

Company: \_\_\_\_\_

Contact: \_\_\_\_\_ Title: \_\_\_\_\_

Address: \_\_\_\_\_

City, state, zip: \_\_\_\_\_

Telephone: (\_\_\_\_\_) \_\_\_\_\_ Ext. \_\_\_\_\_ Fax: (\_\_\_\_\_) \_\_\_\_\_

E-mail: \_\_\_\_\_

Please send quote via  e-mail  fax

### 3. SYSTEM TO QUOTE

1. Synergy 5, conveyORIZED turntable (rotates the load) \_\_\_\_\_
2. Synergy PA platform automatic, forklift loads turntable and removes from turntable \_\_\_\_\_
3. Freedom 6500, conveyORIZED rotating arm (film rotates around the stationary load) \_\_\_\_\_
4. Freedom PA platform automatic, forklift loads platform and removes from platform \_\_\_\_\_

### 4. PRODUCTION REQUIREMENTS

1. Production speeds required: Normal production capacity is \_\_\_\_\_ loads per hour.  
Peak / surge production capacity is \_\_\_\_\_ loads per hour.  
Future production capacity will be \_\_\_\_\_ loads per hour.
2. Daily machine operation requirement: \_\_\_\_\_ One shift (8 hours)    \_\_\_\_\_ Two shifts    \_\_\_\_\_ Three shifts
3. Days in operation (per year): \_\_\_\_\_

### 5. PRODUCT DESCRIPTION

1. Product / container to be wrapped (e.g., bagged goods, liquid products, canned goods, etc.): \_\_\_\_\_  
\_\_\_\_\_
2. Individual package / unit description:    \_\_\_\_\_ Cartons    \_\_\_\_\_ Bottles    \_\_\_\_\_ Cans    \_\_\_\_\_ Bundles    \_\_\_\_\_ Trays  
\_\_\_\_\_ Boxes    \_\_\_\_\_ Bags    \_\_\_\_\_ Mixed    \_\_\_\_\_ Other (specify): \_\_\_\_\_
3. What colors are the products / loads? \_\_\_\_\_
4. Web site to see product www. \_\_\_\_\_

**NOTE: Clear or dark colors may require special load sensors to insure their detection.**

## 6. LOAD INFORMATION

### 1. Stability of load

- Very stable (can be conveyed, started, and stopped on powered roller conveyor at a rate of 30 feet per minute.)  
 Stable (conveyed at 30 feet per minute, some deterioration from original unitization pattern; individual units shift / move, but load remains integrated.)  
 Unstable, requires special handling (describe): \_\_\_\_\_

**NOTE: Loads requiring special handling or that are somewhat unstable may need to be tested at Highlight to determine conveyor specifications (spacing, speed, type) and machine configuration (top platen, turntable RPM, etc.)**

2. Load ships via:  Truck  Rail  Boat  Air  Open air flatbed  Van

3. Product on:  Pallet  Slipsheet only  Pallet and slipsheet  Palletless (no substrate)  
 Other (describe): \_\_\_\_\_

**NOTE: Palletless loads or on slipsheets require special conveyors. Load testing by Highlight may be required.**

### 4. a. Load or type of material handling equipment to be used on infeed / outfeed conveyor would be:

- From a palletizer  Transfer car  Forklift  Clamp truck  
 Other (specify): \_\_\_\_\_

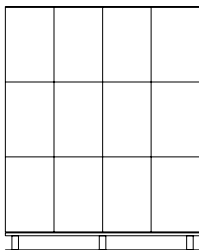
### b. Specifications for customer conveyors which will interface with Highlight's

Infeed is: fixed speed at \_\_\_\_\_ feet per minute  
 adjustable speed running currently at \_\_\_\_\_ feet per minute and is adjustable from a minimum \_\_\_\_\_ feet per minute and a maximum \_\_\_\_\_ feet per minute.  
 Exit is: fixed speed at \_\_\_\_\_ feet per minute  
 adjustable speed running currently at \_\_\_\_\_ feet per minute and is adjustable from a minimum \_\_\_\_\_ feet per minute and a maximum \_\_\_\_\_ feet per minute.  
 Customer conveyor height is: \_\_\_\_\_ inches tall for infeed  
 \_\_\_\_\_ inches tall for the exit

### 5. Load configuration / profile:

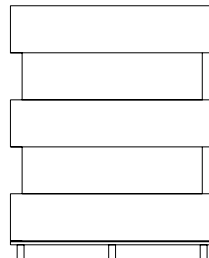
"A" profile

Regular loads with no puncture hazards



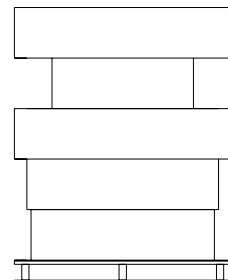
"B" profile

Puncture hazards up to 3 inches



"C" profile

Puncture hazards over 3 inches



## 6. LOAD INFORMATION (continued)

6. Top layer configuration:

\_\_\_ Full layer      \_\_\_ Partial layer (describe): \_\_\_\_\_

\_\_\_ Level      \_\_\_ Uneven (describe): \_\_\_\_\_

\_\_\_ Voids (describe): \_\_\_\_\_

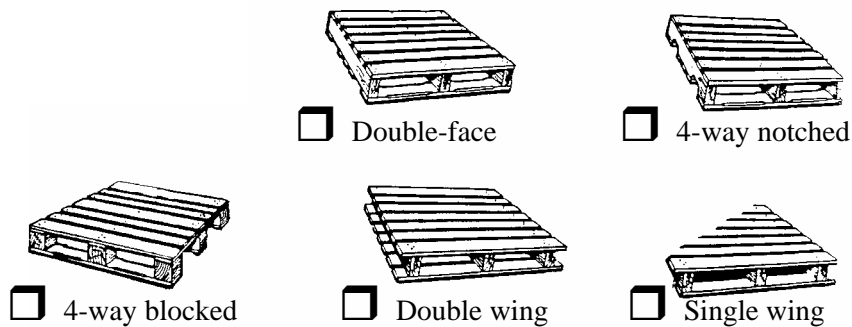
**NOTE: Partial or uneven top layers may cause top platen or pallet height sensor problems. These can affect load stability and / or film coverage on top load layers.**

7. Load weight: \_\_\_ Minimum      \_\_\_ Maximum      \_\_\_ Average

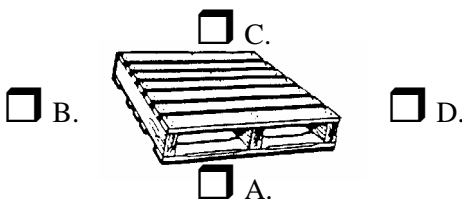
8. Load dimensions:	<u>MAXIMUM</u>	<u>MINIMUM</u>	<u>AVERAGE</u>
A. Length dimensions	_____	_____	_____
Width dimensions	_____	_____	_____
Height (include pallet)	_____	_____	_____

## 7. PALLET SPECIFICATIONS

1. Indicate types of pallets to be used during the stretch bundling process



2. Indicate below the directions from which pallet may be entered by fork truck for loading / unloading:



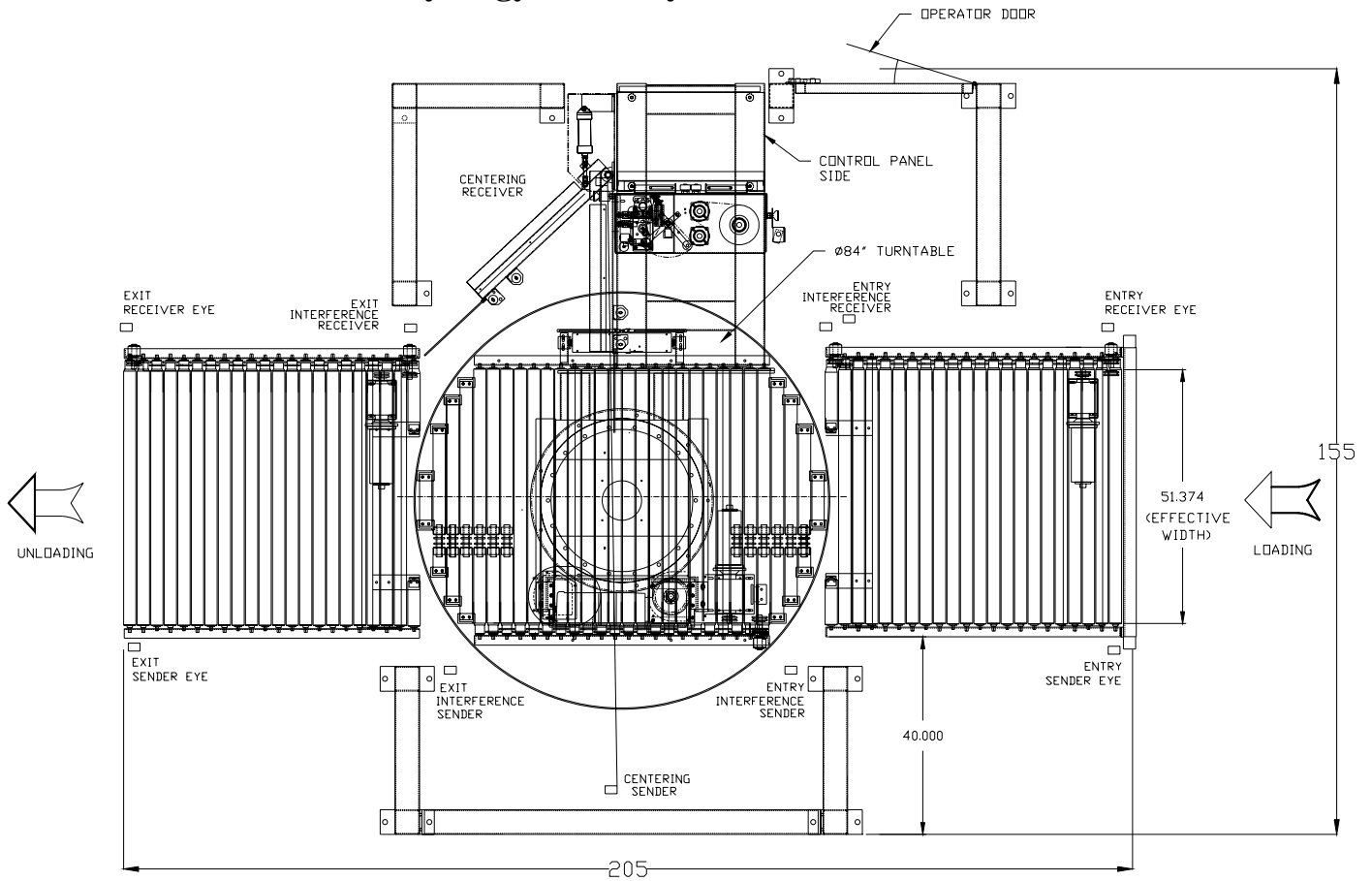


## 9. OPERATIONAL SPECIFICATIONS

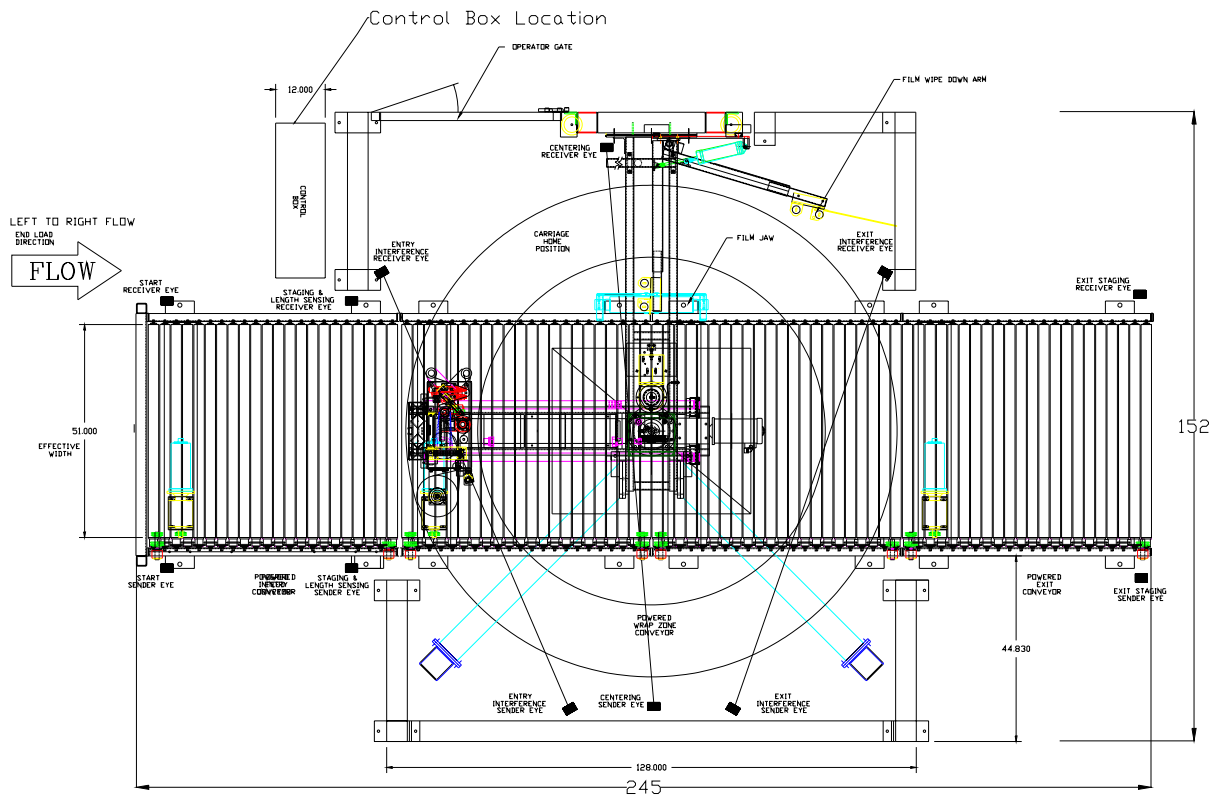
1. Direction of product flow required (standard right-to-left on Synergy 5, left-to-right is standard on Freedom 6500 see diagrams). Acceptable? \_\_\_\_\_

Mark on the diagram to indicate required direction of product flow if different from standard. Mark on diagram product loading / unloading positions if system is not a “flow” through system

### Synergy 5 ConveyORIZED Automatic:



# Freedom 6500 Conveyorized Automatic



## 2. Automatic top sheet dispensing (if required):

\_\_\_ Constant product height

\_\_\_ Variable product height: \_\_\_ Minimum \_\_\_ Maximum

\_\_\_ Custom top sheet requirements

Specific requirements: \_\_\_\_\_

## 10. SYSTEM CONFIGURATION

**NOTE: Pass height of all conveyor rollers is 20 inches standard. Other pass height required \_\_\_\_\_”**

1. Highlight **INFEED** conveyor:

B. Power conveyor:

Number of sections: \_\_\_\_\_ (standard is 5 feet)

Effective width: \_\_\_\_\_ (standard is 52 inches)

C. Dead roller conveyor for accumulating additional loads:

Number of loads accumulated: \_\_\_\_\_

Length of each section: \_\_\_\_\_

Effective width: \_\_\_\_\_

2. Highlight **EXIT** conveyor:

B. Power conveyor:

Number of sections: \_\_\_\_\_ (standard is 5 feet)

Effective width: \_\_\_\_\_ (standard is 52 inches)

C. Dead roller conveyor for accumulating additional loads:

Number of loads accumulated: \_\_\_\_\_

Length of each section: \_\_\_\_\_

Effective width: \_\_\_\_\_

# 11. STANDARD COMPONENTS

STANDARD COMPONENT BRANDS (NOTE: Specify different brand if needed.)

		OTHER REQUESTS
1. Pneumatic requirements:	80 PSI, 3 CFM	_____
2. Controller specifications:	Allen-Bradley SLC-500	_____
3. Buttons and switches:	Allen-Bradley 800T series	_____
4. Limit switches:	Allen-Bradley	_____
5. Photo sensor:	Allen-Bradley	_____
6. Disconnect:	Allen-Bradley	_____
7. Motors:	Baldor	_____
8. DC contactors:	Allen-Bradley	_____
9. Wiring:	14 gauge minimum on machine	_____
10. Enclosures:	NEMA 12	_____
11. Voltage required:	___ 460 V, 15 amp, 3 phase	
	___ 230 V, 30 amp, 3 phase (standard)	
	___ Other (specify): _____	

**NOTE: Variations in electrical supply may require isolation transformer or special design to protect components and insure consistent machine performance.**

## 12. INSTALLATION DATA

1. Compressed air requirements *at the location of the system* 80 PSI, 3 CFM, clean, dry air.  
 Yes  No

**NOTE: Air supply line at the system must be a minimum of 1/2" in diameter.**

**NOTE: Standard systems are equipped with an air filter regulator. Variations in air supply, especially drops, will affect system performance.**

2. Ceiling height clearance: \_\_\_\_\_ (feet)

3. Annual temperature range in the plant area where system will operate:

\_\_\_\_\_ °F maximum (Ambient temperatures over 100°F require special control panel modifications.)

\_\_\_\_\_ °F minimum (Ambient temperatures below 40°F may require special control panel modifications to protect components and insure consistent performance.)

\_\_\_\_\_ °F typical

4. Environmental factors:

Potential explosive dust buildup:  Yes  No

Potential explosive fumes:  Yes  No

Potential corrosives:  Yes  No

Wash-down area:  Yes  No

If yes, describe requirements: \_\_\_\_\_  
\_\_\_\_\_

**NOTE: Special design engineering may be required. Customer consideration must also be given to the affects of film unwind and stretching as they relate to any environmental restrictions.**

5. Paint:  Highlight standard (pipeline green)  
 Special paint (specify manufacturer color, reference numbers, etc.) \_\_\_\_\_

\_\_\_\_\_  
\_\_\_\_\_  
\_\_\_\_\_

**Thank you for taking the time to fill in this questionnaire for Highlight Industries. We will use it to design the best Stretch Wrap Solution available to meet your speed and product needs.**

