

# Highlight Industries Turntable Series

December 2006

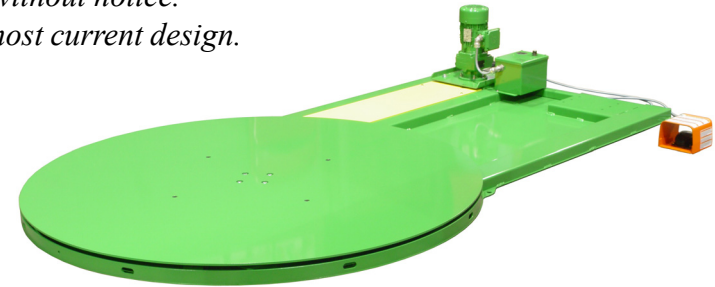
*Specifications are subject to change without notice.  
Pictures do not necessarily represent the most current design.*



## Synergy High Profile Turntable – \$2,695.00

Part No. 788001

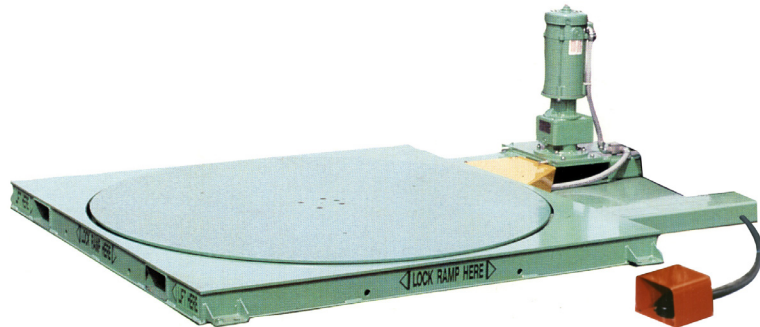
- 48" octagonal turntable top
- 4,000 lb. load capacity
- Variable speed to 12 rpm
- Self-aligning casters with 8" drive wheel
- Easy access foot pedal control
- 3/4 HP AC drive system with soft start
- Steel diamond plate surface
- Shock absorbing flexible coupling
- Front and rear forklift portable
- Modular – ready to accept Synergy 1, 1.5, 2, 2.5 or 3 tower



## Synergy Low Profile Turntable – \$2,695.00

Part No. 788002

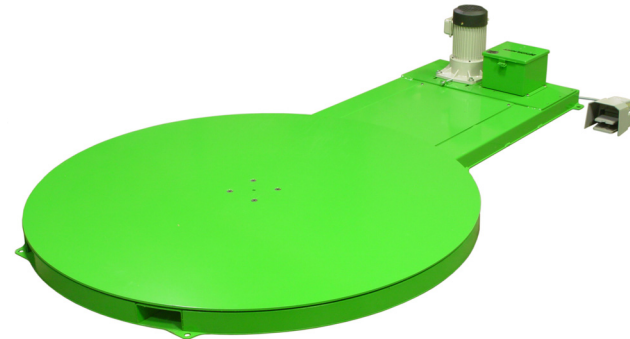
- 65" diameter turntable
- 4,000 lb. load capacity
- Variable speed to 12 rpm
- 10 cam rollers with center bearing support
- Easy access foot pedal control
- 3/4 HP AC drive system with soft start
- 3/8<sup>th</sup> inch steel plate construction
- Rear forklift portable
- 48" ramp with porch available (\$495.00)
- Modular – ready to accept Synergy 1, 1.5, 2, 2.5 or 3 tower



## Synergy Heavy Duty Low Profile Turntable – \$3,195.00

Part No. 788003

- 60" diameter turntable
- 5,000 lb. load capacity
- Variable speed to 12 rpm
- 12 cam rollers with center bearing support
- Easy access foot pedal control
- 3/4 HP AC drive system with soft start
- 3/8<sup>th</sup> inch steel plate construction
- Front and rear forklift portable
- 48" ramp with porch available (\$495.00)
- Modular – ready to accept Synergy 1, 1.5, 2, 2.5 or 3 tower



## Predator® Low Profile Turntable – \$2,395.00

Part No. 700501

- 59" diameter turntable
- 4,000 lb. load capacity
- Variable speed to 12 rpm
- 14 cam rollers with center bearing support
- Easy access foot pedal control
- 1/2 HP AC drive system with soft start
- 1/4 inch steel plate construction
- Rear forklift portable
- 48" ramp with porch available (\$495.00)
- Modular – ready to accept Predator® or Synergy .5 tower

**HIGHLIGHT**  
INDUSTRIES, INC.

2694 Prairie St SW • Grand Rapids, MI 49519  
616-531-2464 • 800-531-2465 • fax 616-531-0506  
info@highlightindustries.com highlightindustries.com

Pictures may not depict current design.